

Access

By Bus

From JR Kanazawa Station East Exit, take a Hokutetsu Bus.

Travel time is approximately 30 minutes.

- From JR Kanazawa Station, take the bus bound for「Nonoichi/Tsurugi」,get off at「Hisayasu Minami」, walk for 1 minute.
- From JR Kanazawa Station, take the bus bound for「Matto」,get off at「Nimando」, walk for 15 minutes.
- From JR Kanazawa Station,take the bus bound for「Korinbo」,get off at「Korinbo (in front of Atrio)」,transfer to the bus bound for「Takao/Kodai-mae (via Kuyasu)」, get off at「Hisayasu 3-chome」,walk for 3 minutes.

By Train

- From JR Nishi-Kanazawa Station,walk 1 minute to Shin-Nishi-Kanazawa Station on the Hokuriku Railroad Ishikawa Line. Take the train bound for「Tsurugi(approx.6 minutes)」,get off at「Nonoichi-Koudai-mae」,walk for 15 minutes .

By Car

- About 25 minutes from JR Kanazawa Station.
- About 25 minutes from Kanazawa-Nishi Interchange on the Hokuriku Expressway.

From Outside Ishikawa Prefecture (By Train)

- About 2.5 hours from JR Tokyo Station to JR Kanazawa Station (via Shinkansen).
- About 2.5 hours from JR Nagoya Station to JR Kanazawa Station (via Limited Express train).

ホームページ



MAP



Instagram



学校法人 清永学園
金沢福祉専門学校

〒921-8164 金沢市久安3丁目430番地
TEL 076-242-1625(代) FAX 076-242-1663



Let’s Learn and Experience Together
Kanazawa Welfare College
welcomes everyone



About our shool

Our school has always upheld its founding principles of "Integrity, Diligence, and Creativity"and its educational philosophy of "Compassion, Service, Hands-on Training, and Smiles,"dedicating itself to nurturing skilled professionals in the welfare field. As the first care worker training institution in the Hokuriku region, we celebrate our 52nd anniversary this year.

We are renowned for our "practice-oriented curriculum", which emphasizes fieldwork and hands-on training, fostering "capable professionals" with both "expertise and humanity". Our history has been built upon the challenges and efforts of our graduates, and we remain committed to continuous growth.

Take the first step toward your future—learn with us!



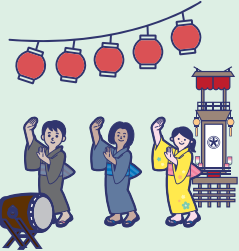
Build Friendships

Our school's students from nine countries—Japan, Nepal, Myanmar, Sri Lanka, Mongolia, Vietnam, Indonesia, China, and Taiwan—creating a diverse and enriching learning environment. At our school, students naturally form friendships across departments while being immersed in a rich multicultural environment—a unique experience that sets us apart.

It feels like traveling the world every day. The time spent learning, growing, and respecting one another in such a diverse setting will surely become a cherished memory for life.



R8年度募集要項はこちら



Events

"Academics" × "Activities" – Add Color to Your School Life!
We host a variety of exciting events, including school festivals, volunteer activities for community welfare, traditional Kanazawa-style celebrations, and cultural exchange programs where you can experience different countries' customs.

Reconstruction Support

The Noto Peninsula Earthquake in January 2024 Since last year, our school has been actively visiting Noto to participate in recovery support efforts. Working together with local festivals and traditional culture, we are taking school-wide action to help uplift the spirits of the community.

Through these activities, we are gaining valuable experience in "welfare" and "community contribution"while making a meaningful difference in society.



Part time jobs

Part-Time Work: A Valuable Experience During Student Life .
At our school, we support students in finding part-time jobs tailored to their individual needs, offering personalized job referrals and guidance. Many international students also balance work and studies to help cover living expenses and tuition fees.



Graduates' Career Pathways

Care Welfare Department Graduates
Putting acquired knowledge, technical skills, and professional certifications to immediate use - making meaningful impacts in caregiving settings across Japan.

Global Business Department Graduates
Embarking on their journeys as tomorrow's business leaders - equipped with multilingual competencies and cross-cultural management skills.

Japanese Language Department Students
Pursuing specialized advancement through our internal articulation system - simultaneously elevating Japanese proficiency while mastering professional disciplines in Care Welfare or Global Business.

To all our graduates taking bold steps toward your dreams:Every faculty member stands ready to provide our fullest support as you write your next chapter.



Graduation Ceremony

This is a special day when you, who have learned and supported each other as comrades, spread your wings toward your respective futures. Over 3,000 graduates from our school have already ventured out into society.

The days spent here and the bonds forged with friends will surely become a great source of strength in your lives ahead."

select a department

Department of Care and Welfare

"Certified Care Worker: A Profession That "Designs Lives"

As Japan's population continues to age, care workers are becoming increasingly vital to society. Their role is to design lifestyles that allow the elderly and people with disabilities to live independently and with peace of mind. To fulfill this important mission, care workers need both solid technical skills and practical abilities, as well as warm, compassionate humanity.

At our school, we train specialists in caregiving who possess these qualities. Through education that fosters both hands-on caregiving skills and a deeply empathetic mindset, we aim to nurture individuals who will become essential pillars of the future welfare society—always staying close to those they care for.



Department of Global Business

Become a Future Leader on the Global Stage!

Our newly established Global Business Program (launching in 2025) is dedicated to:

- Developing Well-Rounded Individuals
- Cultivating Global Talent to Drive Japan's Industries Forward Through our strong partnerships with hotels, ryokan (traditional inns), and restaurants across Japan—including Ishikawa Prefecture—we provide hands-on internship opportunities. What sets our program apart is the perfect blend of business theory and real-world practice, giving students unparalleled industry experience from day one.

If you aspire to succeed in Japan's business world with a global mindset, take your first bold step toward an exciting future in Kanazawa!



Department of Janpanese Language

In Kanazawa, a castle town where tradition and future come alive, take your new first step!

The Japanese Language Department warmly welcomes international students from around the world.

Our school offers classes tailored to all levels, from beginners to advanced learners. In addition to everyday conversation, you can also learn practical Japanese for academic advancement.

Why not expand new possibilities while learning Japanese, experiencing its culture, and interacting with its people? We are here to fully support you in achieving your dreams! Your studies in Kanazawa will be the first step toward your future!



Internship・Care Work Practicum

Hands-On Learning: Our Strength in Internships and Practical Training
A key advantage of our school is our emphasis on "real-world experience"through internships and practical training programs. We collaborate with businesses and institutions not only in Ishikawa Prefecture but across Japan, providing students with immersive learning environments to develop "job-ready skills".Welfare & Care Studies

Students gain "essential knowledge" and techniques through hands-on training at local care facilities, preparing them for immediate contributions in the field.



Examination・License

Exams and Certification: The Culmination of Your Learning Journey Welfare & Care Studies Students take on the national "Kaigo Fukushima" (Certified Care Worker) licensing exam Global Business Studies Students pursue various certifications including:

- Bookkeeping qualifications
- Business Skills Certification
- JLPT (Japanese-Language Proficiency Test)

Earning professional certifications builds confidence and becomes a pivotal step toward your next career milestone.